

# PRODUCT BULLETIN

## Series 102 HDI Drill Product Line

Kyocera Tycom Corporation

10/18/11

### Abstract

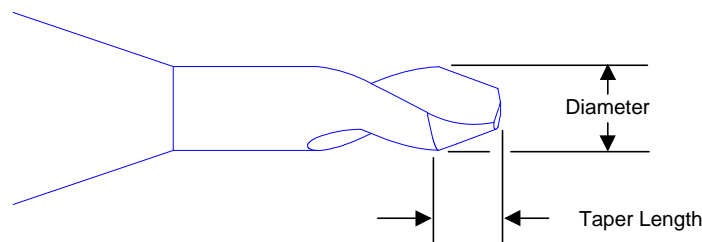
Kyocera Tycom Corporation (KTC) is committed to continuous improvement in all of its product offerings, particularly when faced with new PCB applications and materials. In order to meet these new challenges, KTC is pleased to introduce its new product to address HDI applications, Series 102 Drill product series. The new design demonstrates improved hole wall and top surface quality. Series 102 is a two-flute product which has a designed side taper, promoting superior plating capability. This document details the product line developed in the Kyocera Tycom Development Lab in order to demonstrate to the PCB market the high performance of this new product.

Product is currently available.

KTC offers the Series 102 in the following diameter:

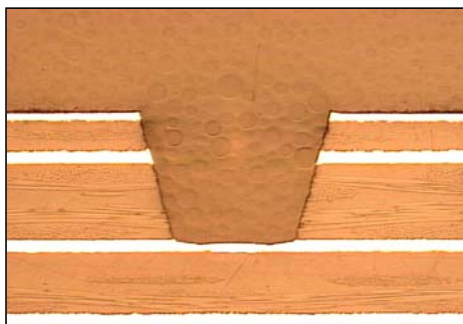
Diameter	Taper Length	with standard rings	without rings
<b>0.10mm</b> (0.0039")	<b>0.10mm</b> (0.0039")	<b>102.0039.030</b>	<b>102-0039.030</b>
<b>0.13mm</b> (0.0050")	<b>0.13mm</b> (0.0050")	<b>102.0050.030</b>	<b>102-0050.030</b>
<b>0.15mm</b> (0.0059")	<b>0.15mm</b> (0.0059")	<b>102.0059.030</b>	<b>102-0059.030</b>
<b>0.20mm</b> (0.0079")	<b>0.20mm</b> (0.0079")	<b>102.0079.050</b>	<b>102-0079.050</b>
<b>0.25mm</b> (0.0098")	<b>0.25mm</b> (0.0098")	<b>102.0098.050</b>	<b>102-0098.050</b>
<b>0.30mm</b> (0.0118")	<b>0.30mm</b> (0.0118")	<b>102.0118.075</b>	<b>102-0118.075</b>
<b>0.35mm</b> (0.0138")	<b>0.35mm</b> (0.0138")	<b>102.0138.075</b>	<b>102-0138.075</b>
<b>0.40mm</b> (0.0157")	<b>0.40mm</b> (0.0157")	<b>102.0157.075</b>	<b>102-0157.075</b>
<b>0.45mm</b> (0.0177")	<b>0.45mm</b> (0.0177")	<b>102.0177.100</b>	<b>102-0177.100</b>
<b>0.50mm</b> (0.0197")	<b>0.50mm</b> (0.0197")	<b>102.0197.100</b>	<b>102-0197.100</b>
<b>0.55mm</b> (0.0217")	<b>0.55mm</b> (0.0217")	<b>102.0217.100</b>	<b>102-0217.100</b>
<b>0.60mm</b> (0.0236")	<b>0.60mm</b> (0.0236")	<b>102.0236.100</b>	<b>102-0236.100</b>
<b>0.65mm</b> (0.0256")	<b>0.65mm</b> (0.0256")	<b>102.0256.100</b>	<b>102-0256.100</b>
<b>0.70mm</b> (0.0276")	<b>0.70mm</b> (0.0276")	<b>102.0276.125</b>	<b>102-0276.125</b>
<b>0.75mm</b> (0.0295")	<b>0.75mm</b> (0.0295")	<b>102.0295.125</b>	<b>102-0295.125</b>

### Series 102 Design

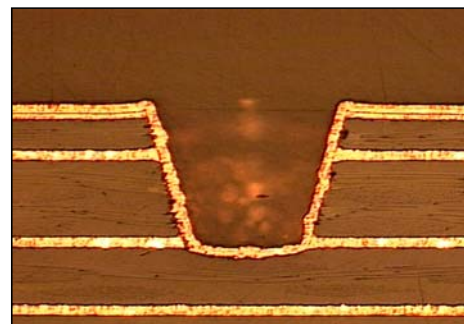


### KTC Series 102 Performance

Lab and beta site tests were conducted to ensure the product performed at an improved level that is both reliable and repeatable.



Series 102 0.25mm Drilled Hole - After Drill



Series 102 0.25mm Drilled Hole - After Plating